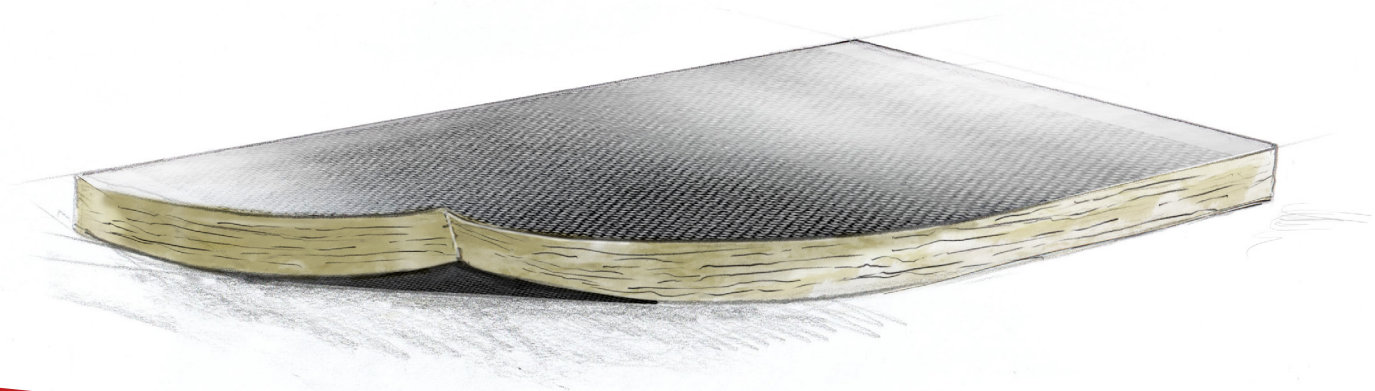


r. **Whiz<sup>®</sup>T**  
Acoustic mineral  
wool slab



Energy to live

**ROHHE<sup>®</sup>**

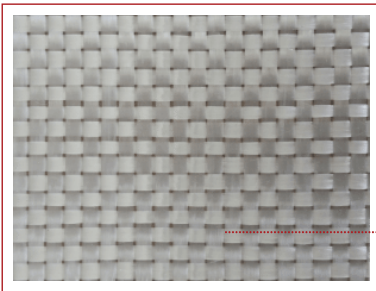
## Product

# r. Whiz®T

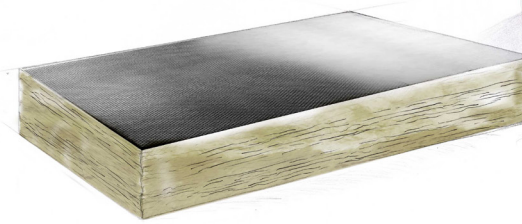
is a mineral wool slab covered with special woven fiberglass cladding. The mineral wool has excellent sound absorption properties. The layout of mineral wool fibres and an innovative method of glueing the fabric make an r.Whiz®T slab very stiff and guarantee permanence of mechanical and absorption properties. The fabric effectively prevents tearing fibres with an airflow of up to 35 m/s. It also has a special antifungal coating thanks to which the product meets the most severe hygiene requirements.



### Structure of the cladding



woven fiberglass

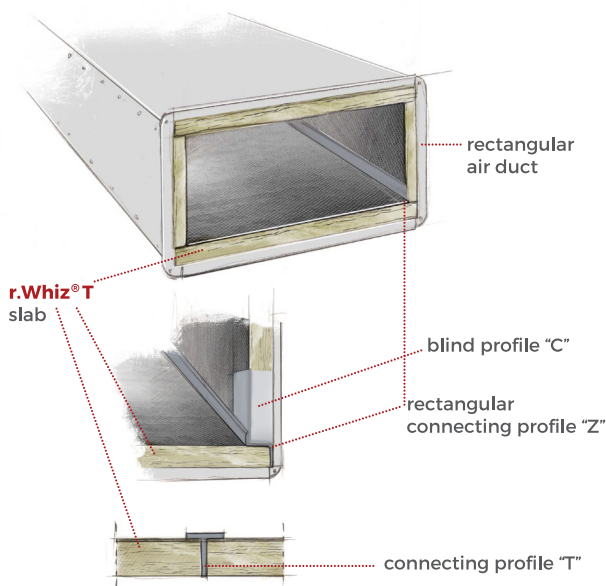


## Application

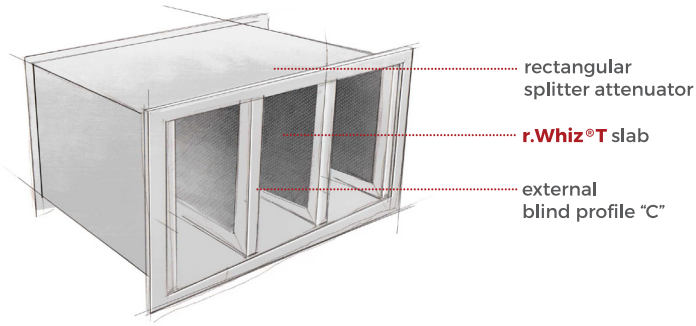
# r. Whiz®T

is intended for acoustic, thermal, fire protection and anti-condensation insulation inside air ducts. The product is also used as a sound absorber inside acoustic attenuators and other devices and elements of an air distribution system.

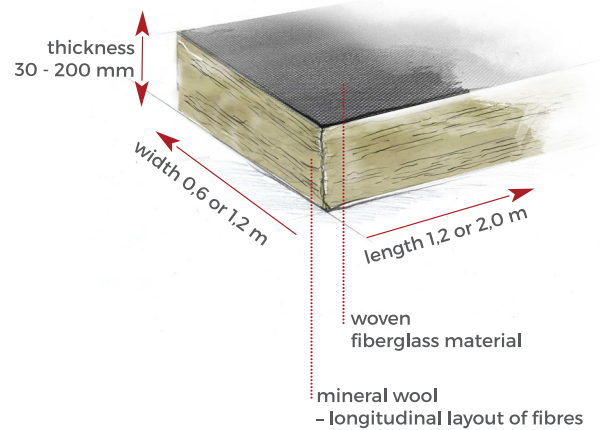
### Acoustic insulation of the air duct



## Acoustic splitter attenuator



## Structure of the product



r.Whiz® slabs also occur in a version with double-sided r.Whiz®TD type.

## Dimensions and density

**r. Whiz®T** occurs in 2 formats.

0.6 x 1.2 - small format (cardboard packaging)  
1.2 x 2.0 - large format (pallet packaging)

A wide variety of thickness (30 - 200 mm) and 2 sizes of r.Whiz®T slabs facilitate the choice of optimal variant for the insulated element.

r.Whiz®T occurs in three densities of mineral wool.


r.Whiz®T3 - 35 kg/m<sup>3</sup>

r.Whiz®T5 - 55 kg/m<sup>3</sup>

r.Whiz®T8 - 80 kg/m<sup>3</sup>

A choice of adequate density allows obtaining adequate characteristic of sound absorption and adequate mechanical stiffness.

## Technical information

PARAMETER	VALUE	UNIT	SYMBOL	STANDARD
declared thermal conductivity coefficient (temp. 10°C)	0,035	W/m·K	$\lambda_D$	EN 12667
fire resistance class	non-flammable	-	A1	EN 13501-1
water absorption (short-term)	≤1	kg/m <sup>2</sup>	WS1	EN 13472
thickness tolerance	-1% lub -1mm/+3mm	% lub mm	T5	EN 13467
width tolerance	±1,5%	%	-	EN 13467
length tolerance	±2%	%	-	EN 13467
CE marking of the product	MW-EN 14303-T5-WS1			
Standard	EN 14303:2016-02			
Hygienic attestation of the Medical University of Gdańsk (GUM)	Nr 69/322/69/2020			
Declaration of Performance (DoP)	DoP-wt3-2019, DoP-wt5-2020, DoP-wt8-2020 (www.rohhe.pl)			

## Method of packaging

Depending on dimensions, **r.Whiz®T** slabs are packed in 2 standards: cardboard and pallet standard. A cardboard standard is intended for slabs measuring 0.6 x 1.2 m whereas a pallet standard is intended for slabs measuring 1.2 x 2.0 m.

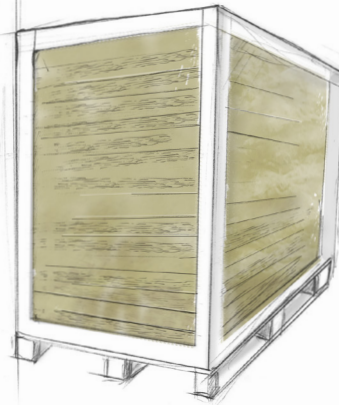


## Cardboard packaging

A cardboard standard is intended for slabs measuring 0.6 x 1.2 m. A cardboard box has dimensions of 0.4 x 0.6 x 1.2 m. Each cardboard box has two special perforated tear-off windows through which you can access its contents easily. Opening such windows does not break the sidewalls of the box. For easier transportation of single packages, the sides of the box have cut handles. The cardboard firmly protects the product against dirt and mechanical damage. Cardboard boxes for **r.Whiz®T** slabs are stacked on a wooden pallet (0.8 x 1.2 m) in two layers. The whole pallet is wrapped in stretch wrap. Such a method of packaging effectively protects the product against damage during transportation and warehouse operations.

## Pallet packaging

A standard of pallet packaging is intended for slabs measuring 1.2 x 2.0 m. Slabs are stacked on a wooden pallet up to a height of 1.5 m or 1.6 m. Side and upper edges of the packed pallet are secured with protective corners and additionally wrapped in stretch wrap. Such a method of packaging firmly protects the product against dirt and mechanical damage which may arise during transportation, storage and warehouse operations.



### Dimensions and quantity (cardboard packaging)

THICKNESS	WIDTH	LENGTH	QUANTITY IN A CARDBOARD BOX	QUANTITY IN A CARDBOARD BOX	QUANTITY ON A PALLET
mm	mm	mm	szt.	m <sup>2</sup>	m <sup>2</sup>
30	600	1 200	13	9,36	74,88
50	600	1 200	8	5,76	46,08
100	600	1 200	4	2,88	23,04
150	600	1 200	2	1,44	11,52
200	600	1 200	2	1,44	11,52

### Dimensions and quantity (pallet packaging)

THICKNESS	WIDTH	LENGTH	QUANTITY IN A CARDBOARD BOX	QUANTITY IN A CARDBOARD BOX	QUANTITY ON A PALLET
mm	mm	mm	szt.	m <sup>2</sup>	m
30	1 200	2 000	50	120	1,5
50	1 200	2 000	30	72	1,5
100	1 200	2 000	15	36	1,5
150	1 200	2 000	10	24	1,5
200	1 200	2 000	8	19,2	1,6

#### ROHHE Sp. z o.o.

05-555 Tarczyn, Al. Krakowska 19A

[rohhe.pl](http://rohhe.pl)

tel. +48 22 299 88 33, [biuro@rohhe.pl](mailto:biuro@rohhe.pl), fax +48 22 299 88 34

Orders: 736 233 377, [zamowienia@rohhe.pl](mailto:zamowienia@rohhe.pl)

Logistics: 736 233 372, [logistyka@rohhe.pl](mailto:logistyka@rohhe.pl)

Sales - Polska: 736 233 371, 736 233 378, 736 233 374, [sprzedaz@rohhe.pl](mailto:sprzedaz@rohhe.pl)

Sales - Export: 736 233 379, [export@rohhe.pl](mailto:export@rohhe.pl)

