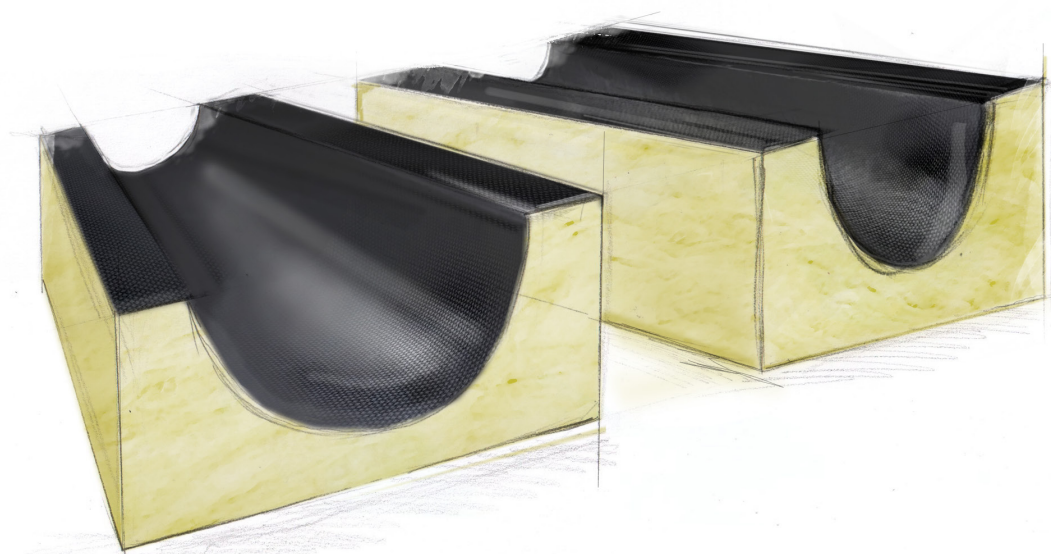


r. Silent[®]T

Mineral wool
silencer



Energy to live

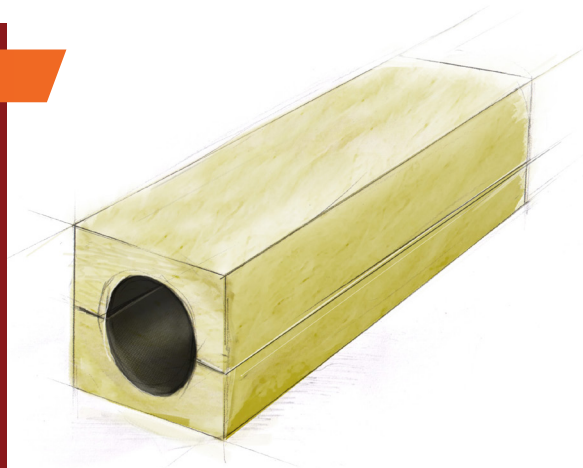


ROHHE[®]

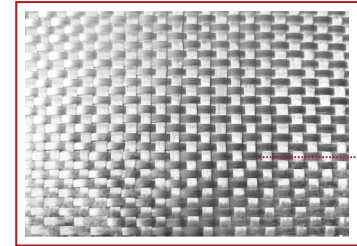
Product

r.Silent®T

is preformed mineral wool covered with a special woven fibreglass cladding. The mineral wool used has excellent soundproofing properties. The arrangement of the mineral wool fibres and the innovative method of bonding the fabric provide the **r.Silent®T** product with high rigidity and a guarantee of constant mechanical and damping properties. The fabric used effectively prevents fibre tearing at air flows of up to 35 m/s. It also has a special anti-fungal coating, thanks to which the product meets the strictest hygienic requirements.



Cladding structure



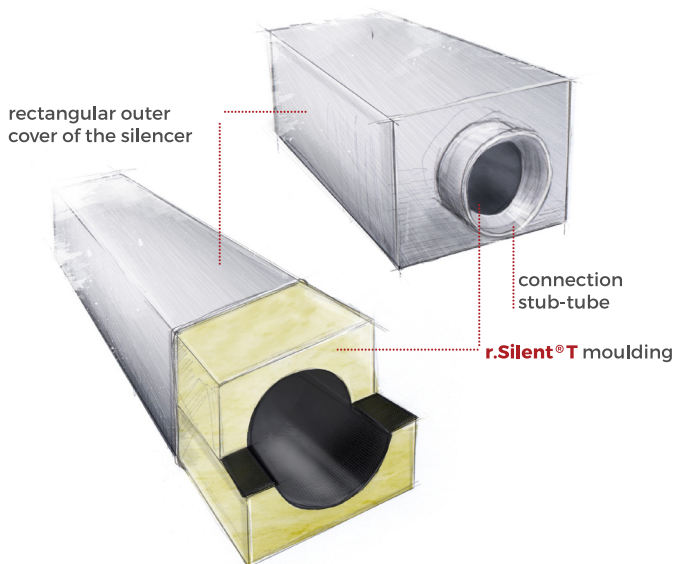
Woven
fibreglass

Application

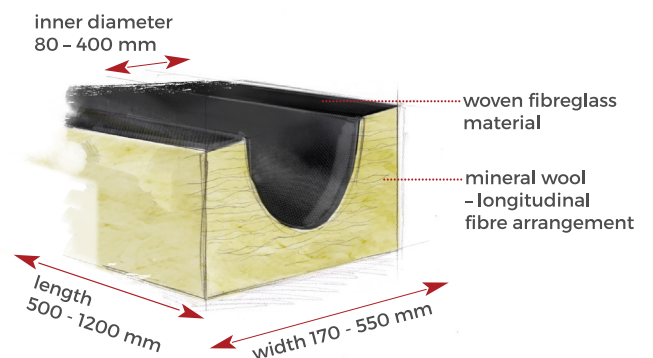
r.Silent®T

is designed for noise reduction in circular ventilation systems. The product is used as an internal damping element for rectangular acoustic silencers. **r.Silent®T** perfectly absorbs sounds generated by typical components and equipment used in ventilation systems. It also effectively reduces the noise generated by air flowing through the system.

Acoustic silencer - rectangular for circular installations



Product structure



Dimensions

r.Silent®T

is available in sizes corresponding to typical components of circular ventilation systems with a range of diameters:

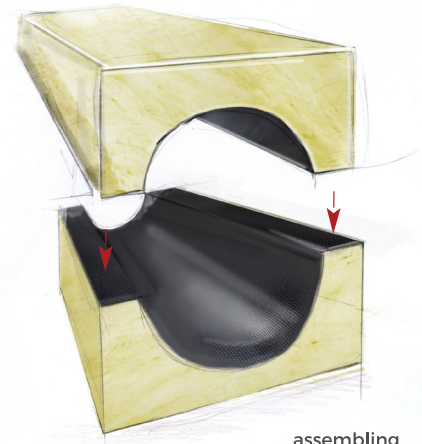
Inner diameters [mm]: 80 ÷ 400

Width/height [mm]: 170 ÷ 550

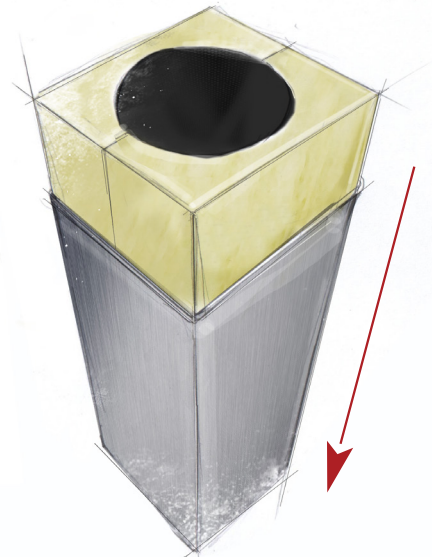
Lengths [mm]: 500, 600, 1000, 1200

r.Silent®T mouldings can also be ordered in other non-standard sizes.

Assembly



assembling the two halves



insertion of the two assembled halves inside the silencer

Assembly

r.Silent®T

consists of two identical halves which, when assembled, form a set ready to be installed inside the acoustic silencer.

Technical details

PARAMETER	VALUE	UNIT	SYMBOL	STANDARD
weighted sound absorption coefficient	$\alpha_w=0,95\pm 0,05$	(klasa A)	AW0,95	EN ISO 11654
reaction to fire	incombustible	class	A2 ₋ s1,d0	EN 13501-1
trace amounts of soluble ions	≤ 10	mg/kg	CL10	EN 13468
Product CE code	MW-EN14303-CL10-AW0,95			
Product Standard	PN-EN 14303:2009+A1:2013			
Product Documents	www.rohhe.com/documents			

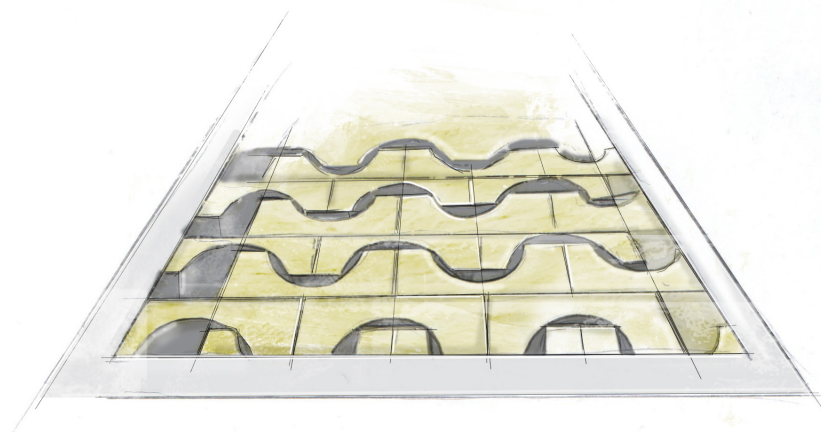
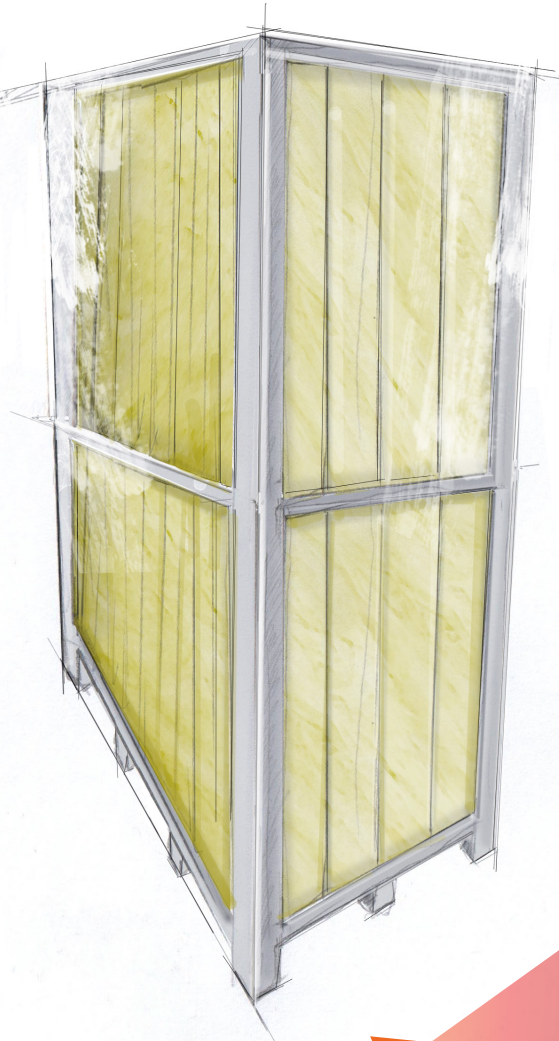


Packaging method

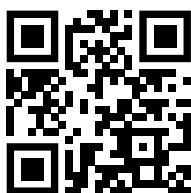
The **r.Silent®T** preformed elements are stacked vertically on a wooden pallet (1.0 x 2.4 m). In addition, a support frame made of cardboard angles is built onto the pallet. Depending on the length of the product, the items are stacked in two, three or four layers. Subsequent layers are separated by a cardboard divider. Depending on the size of the product, a pallet can hold between 50 and 500 sets. The entire packed pallet is protected from above with an auxiliary LDPE hood and additionally wrapped in stretch foil. This packaging method effectively protects the product from damage during transportation and storage operations.

Positioning on the pallet

The individual **r.Silent®T** elements are stacked vertically in alternate directions. This arrangement ensures efficient use of space on the pallet and protects the product from mechanical damage.



ROHHE Partner:



www.rohhe.com

ROHHE Sp. z o.o.

05-555 Tarczyn, Al. Krakowska 19A

tel. +48 22 299 88 33, biuro@rohhe.pl

Orders: 736 233 377, zamowienia@rohhe.pl

Logistics: 736 233 372, logistyka@rohhe.pl

Sale - Poland: 736 233 371, 736 233 375, 797 654 015, 793 500 140,

736 233 378, 736 233 374, sprzedaz@rohhe.pl

Sale - Export: 736 233 379, export@rohhe.pl



ROHHE®