



r. **N**oise<sup>®</sup>T  
Mineral wool  
silencer



**Energy to live**

**ROHHE<sup>®</sup>**

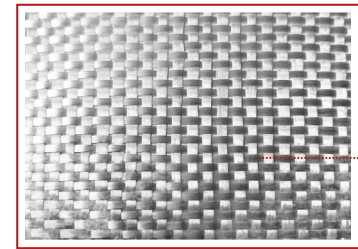
## Product

# r.Noise<sup>®</sup>T

is preformed mineral wool covered with a special woven fibreglass cladding. The mineral wool used has excellent soundproofing properties. The arrangement of the mineral wool fibres and the innovative method of bonding the fabric provide the r.Noise<sup>®</sup>T product with high rigidity and a guarantee of constant mechanical and damping properties. The fabric used effectively prevents fibre tearing at air flows of up to 35 m/s. It also has a special anti-fungal coating, thanks to which the product meets the strictest hygienic requirements.



### Cladding structure



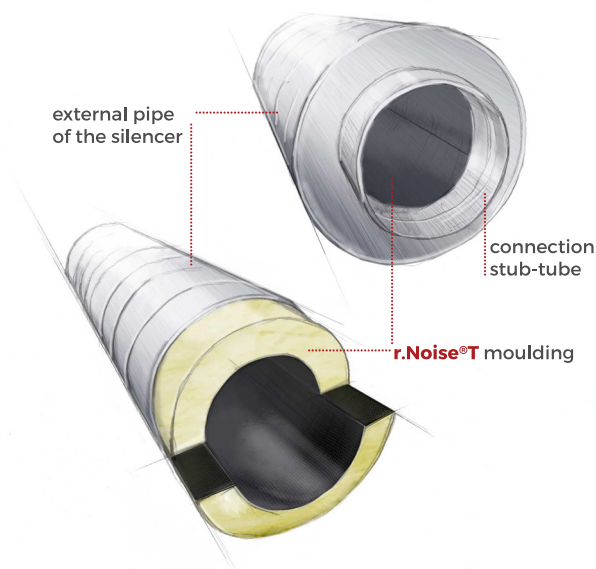
Woven  
fibreglass

## Application

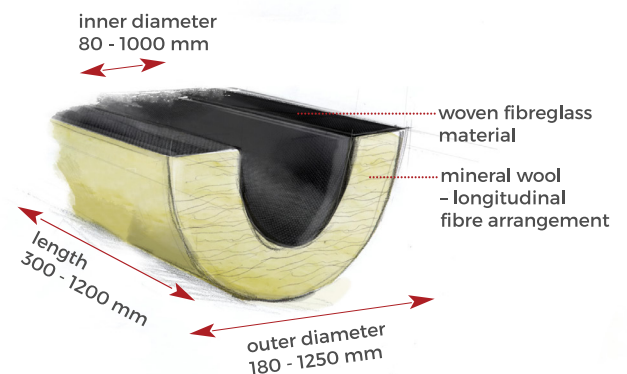
# r.Noise<sup>®</sup>T

is designed for noise reduction in circular ventilation systems. The product is used as an internal damping element for circular acoustic silencers. r.Noise<sup>®</sup>T perfectly absorbs sounds generated by typical components and equipment used in ventilation systems. It also effectively reduces the noise generated by air flowing through the system.

### Acoustic silencer - circular



### Product structure



## Dimensions

# r.Noise<sup>®</sup>T

is available in sizes corresponding to typical components of circular ventilation systems with a range of diameters:

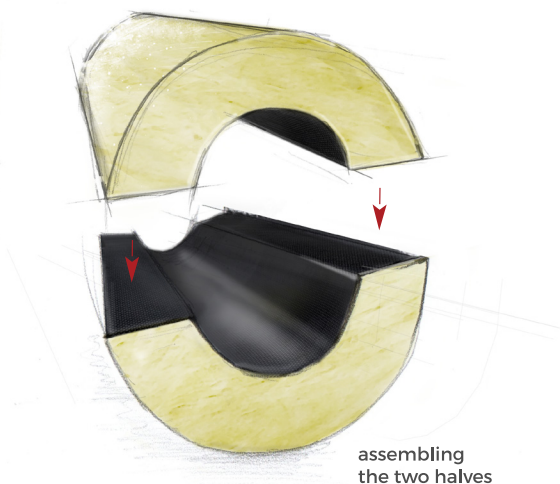
**Inner diameters [mm]:** 80 ÷ 1000

**Outer diameters [mm]:** 180 ÷ 1250

**Lengths [mm]:** 300, 500, 600, 900, 1000, 1200

r.Noise<sup>®</sup>T mouldings can also be ordered in other non-standard sizes.

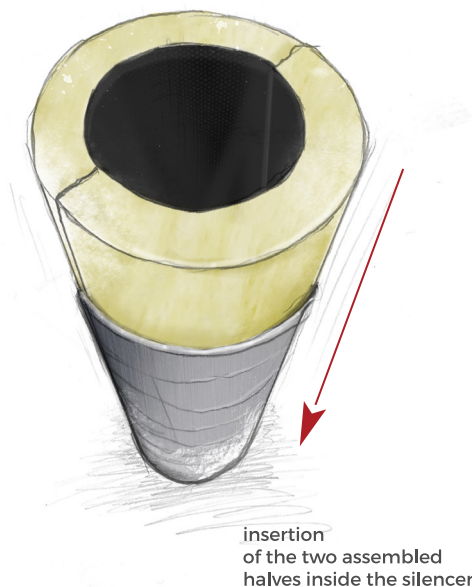
## Assembly



## Assembly

# r.Noise<sup>®</sup>T

consists of two identical halves which, when assembled, form a set ready to be installed inside the acoustic silencer.



## Technical details

PARAMETER	VALUE	UNIT	SYMBOL	STANDARD
weighted sound absorption coefficient	$\alpha_w = 0,95 \pm 0,05$	(klasa A)	AW0,95	EN ISO 11654
reaction to fire	incombustible	class	A2 <sub>L</sub> -s1,d0	EN 13501-1
trace amounts of soluble ions	$\leq 10$	mg/kg	CL10	EN 13468
Product CE code	MW-EN14303-CL10-AW0,95			
Product Standard	PN-EN 14303:2009+A1:2013			
Product Documents	<a href="http://www.rohhe.com/documents">www.rohhe.com/documents</a>			

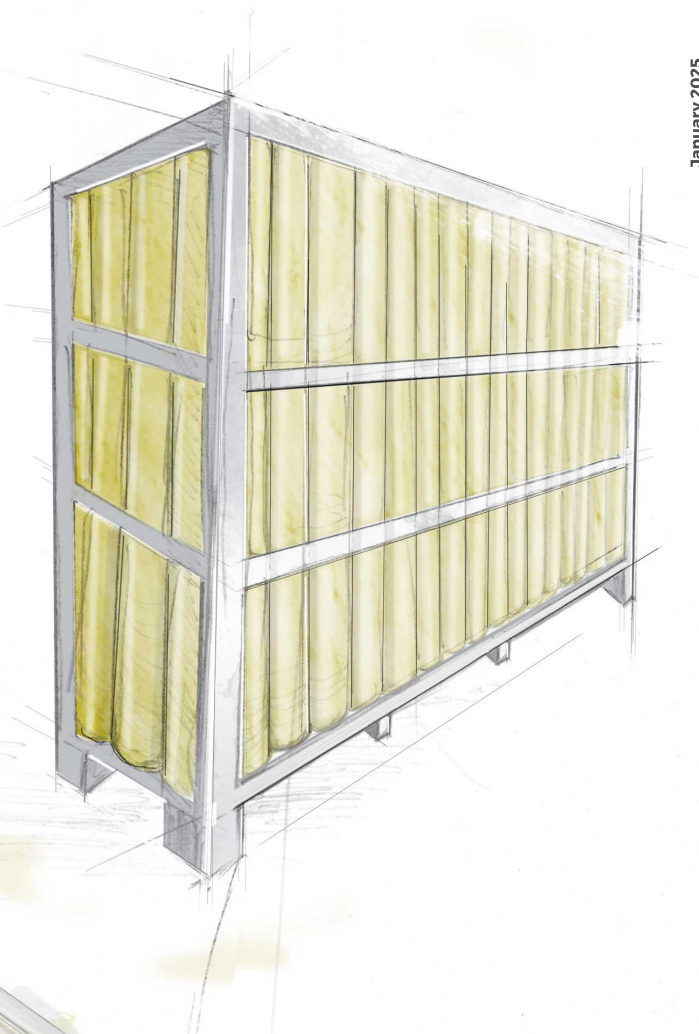


## Packaging method

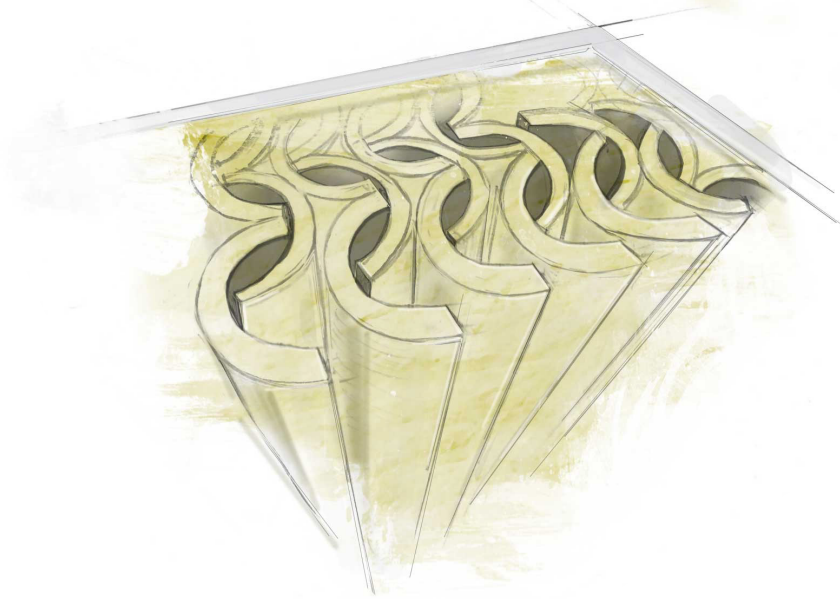
The **r.Noise®T** preformed elements are stacked vertically on a wooden pallet (1.0 x 2.4 m). In addition, a support frame made of cardboard angles is built onto the pallet. Depending on the length of the product, the items are stacked in two, three or four layers. Subsequent layers are separated by a cardboard divider. Depending on the size of the product, a pallet can hold between 20 and 530 sets. The entire packed pallet is protected from above with an auxiliary LDPE hood and additionally wrapped in stretch foil. This packaging method effectively protects the product from damage during transportation and storage operations.

## Positioning on the pallet

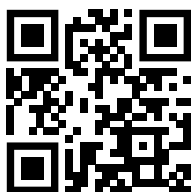
The individual **r.Noise®T** elements are stacked vertically in alternate directions. This arrangement ensures efficient use of space on the pallet and protects the product from mechanical damage.



January 2025



ROHHE Partner:



[www.rohhe.com](http://www.rohhe.com)

**ROHHE Sp. z o.o.**

05-555 Tarczyn, Al. Krakowska 19A

tel. +48 22 299 88 33, [biuro@rohhe.pl](mailto:biuro@rohhe.pl)

Orders: 736 233 377, [zamowienia@rohhe.pl](mailto:zamowienia@rohhe.pl)

Logistics: 736 233 372, [logistyka@rohhe.pl](mailto:logistyka@rohhe.pl)

Sale - Poland: 736 233 371, 736 233 375, 797 654 015, 793 500 140,

736 233 378, 736 233 374, [sprzedaz@rohhe.pl](mailto:sprzedaz@rohhe.pl)

Sale - Export: 736 233 379, [export@rohhe.pl](mailto:export@rohhe.pl)



**ROHHE®**